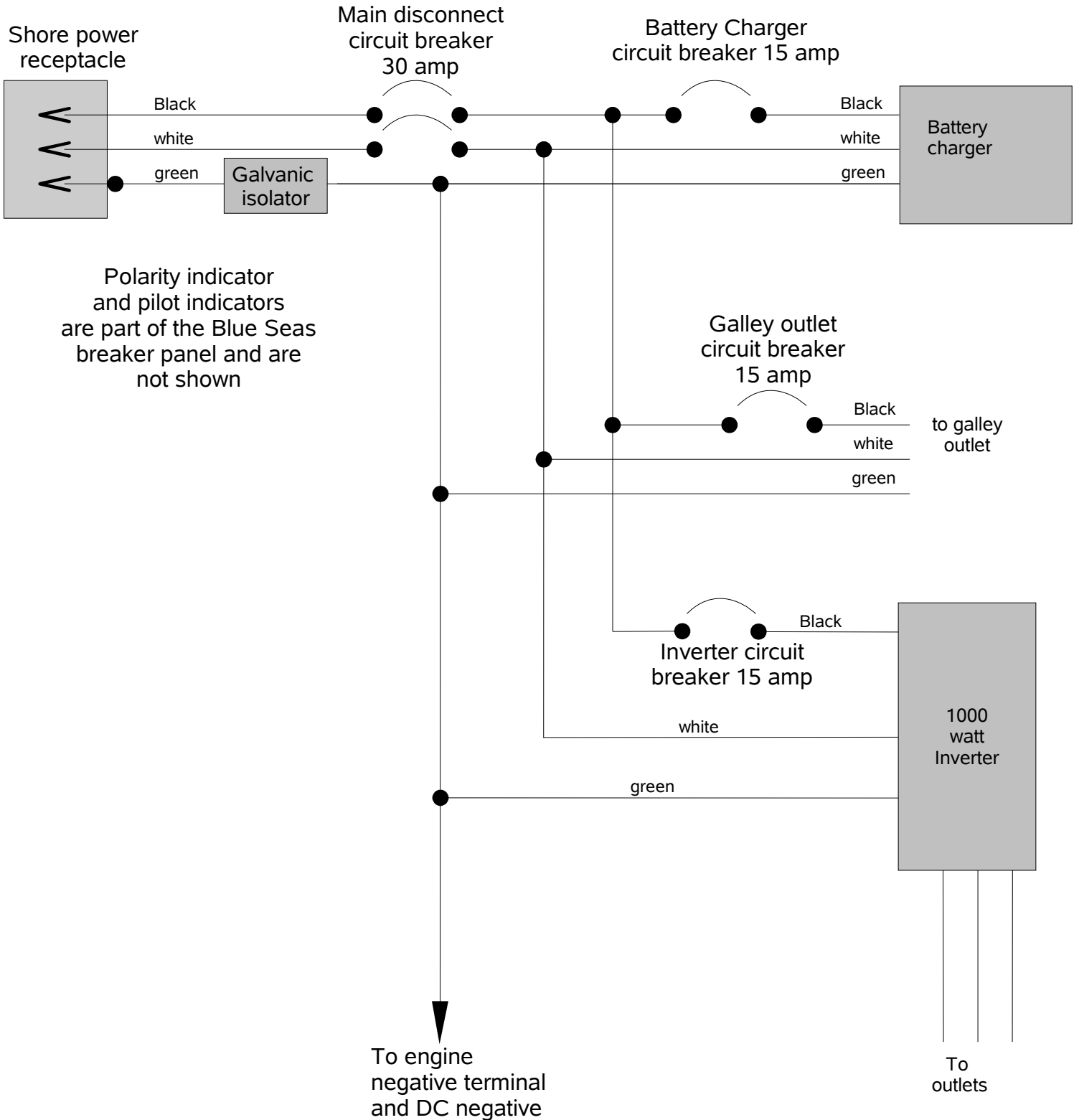
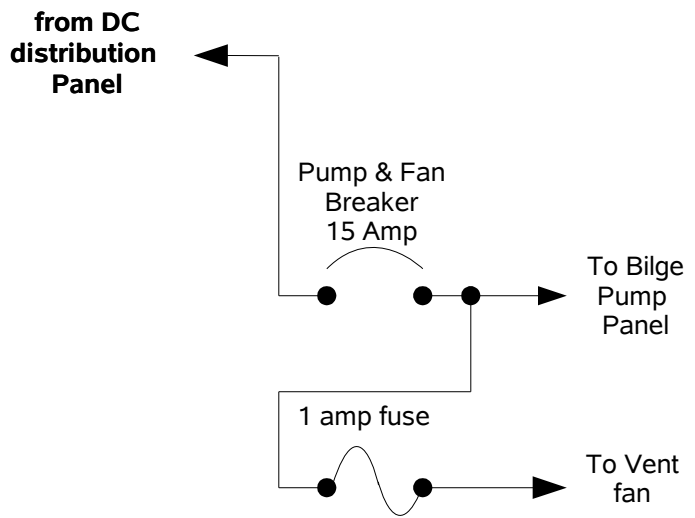
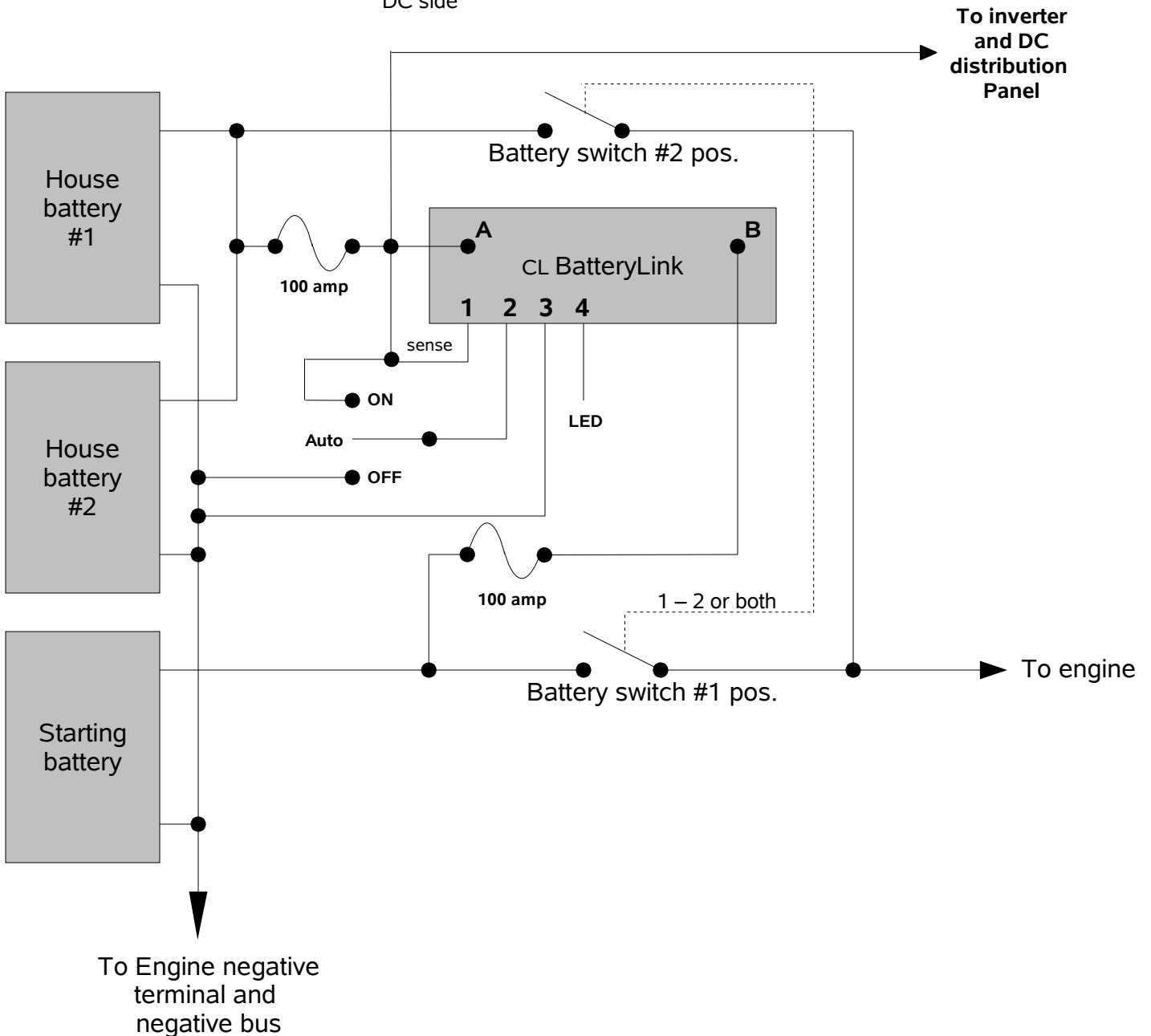


Okbayou wiring diagram  
AC side

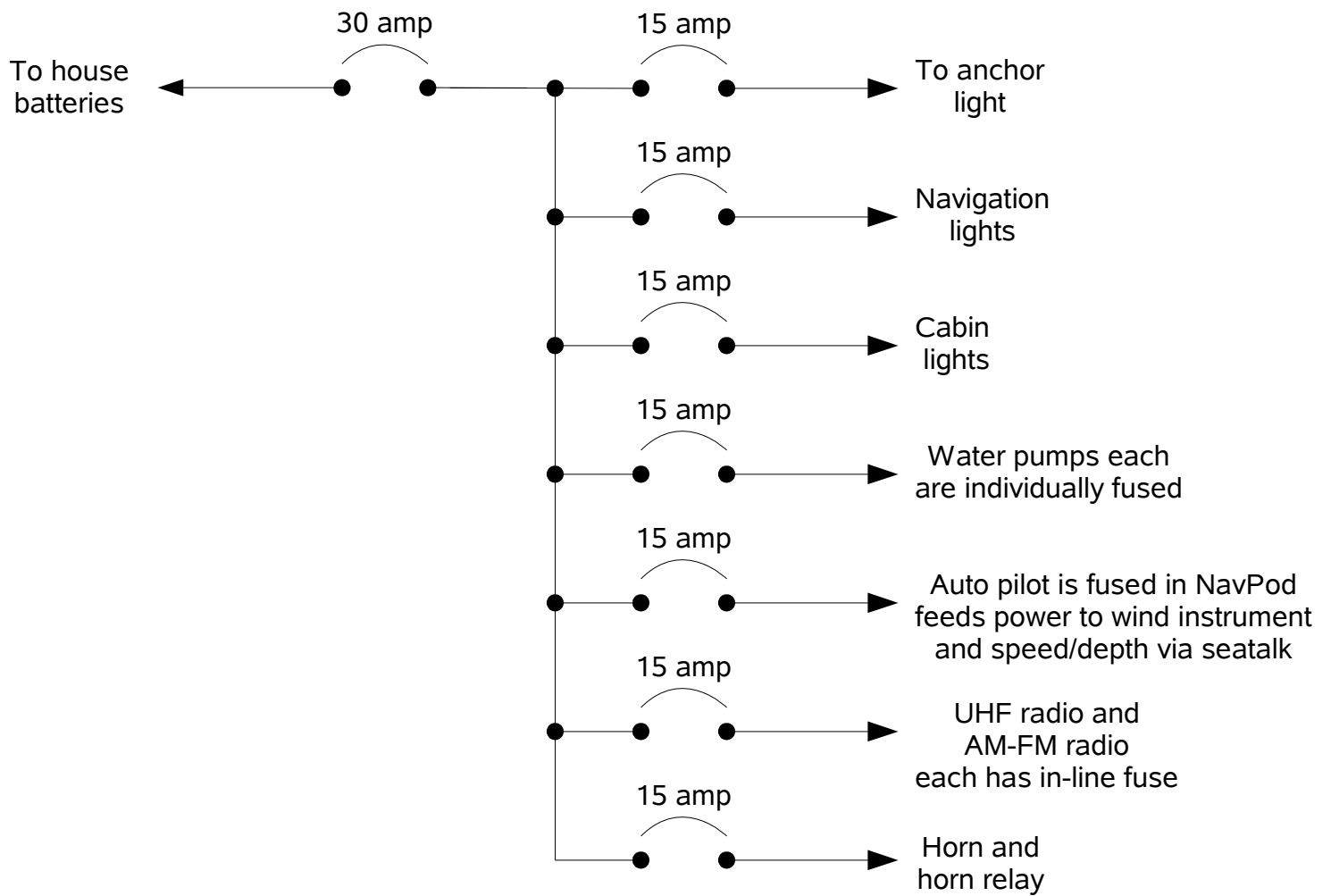


The first outlet group goes to one of the galley GFCI(ground fault circuit interrupter) outlets which feeds a second outlet in the V berth. The second group goes to a second GFCI outlet in the galley which feeds an outlet on the port side and one on the starboard side about midship

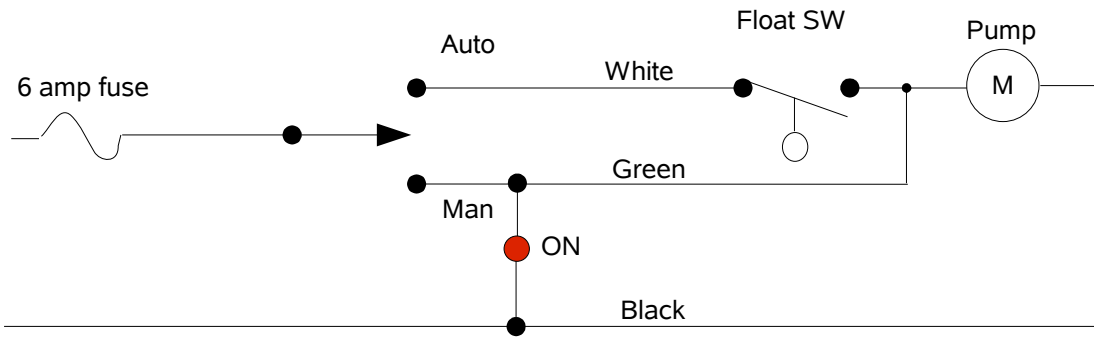
Okbayou wiring diagram  
DC side



# DC distribution panel



## Bilge Pump Circuit



**Shower sump Circuit same as above**